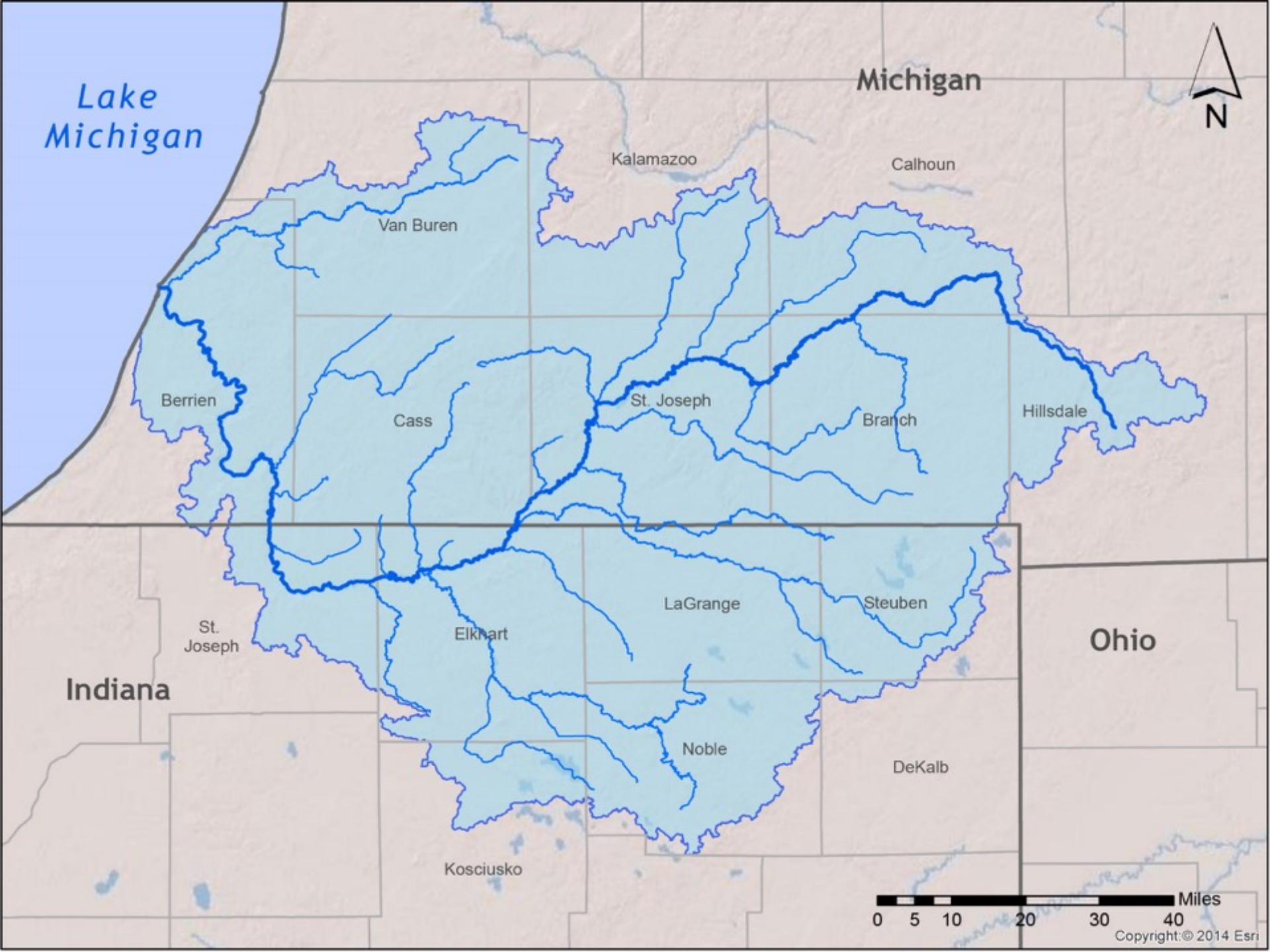




# St. Joseph River Basin Commission

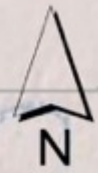
## **Promoting Better Management & Wetland Restoration in Agricultural Watersheds**





Lake Michigan

Michigan



Kalamazoo

Calhoun

Van Buren

Berrien

Cass

St. Joseph

Branch

Hillsdale

St. Joseph

Elkhart

LaGrange

Steuben

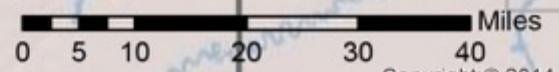
Noble

Kosciusko

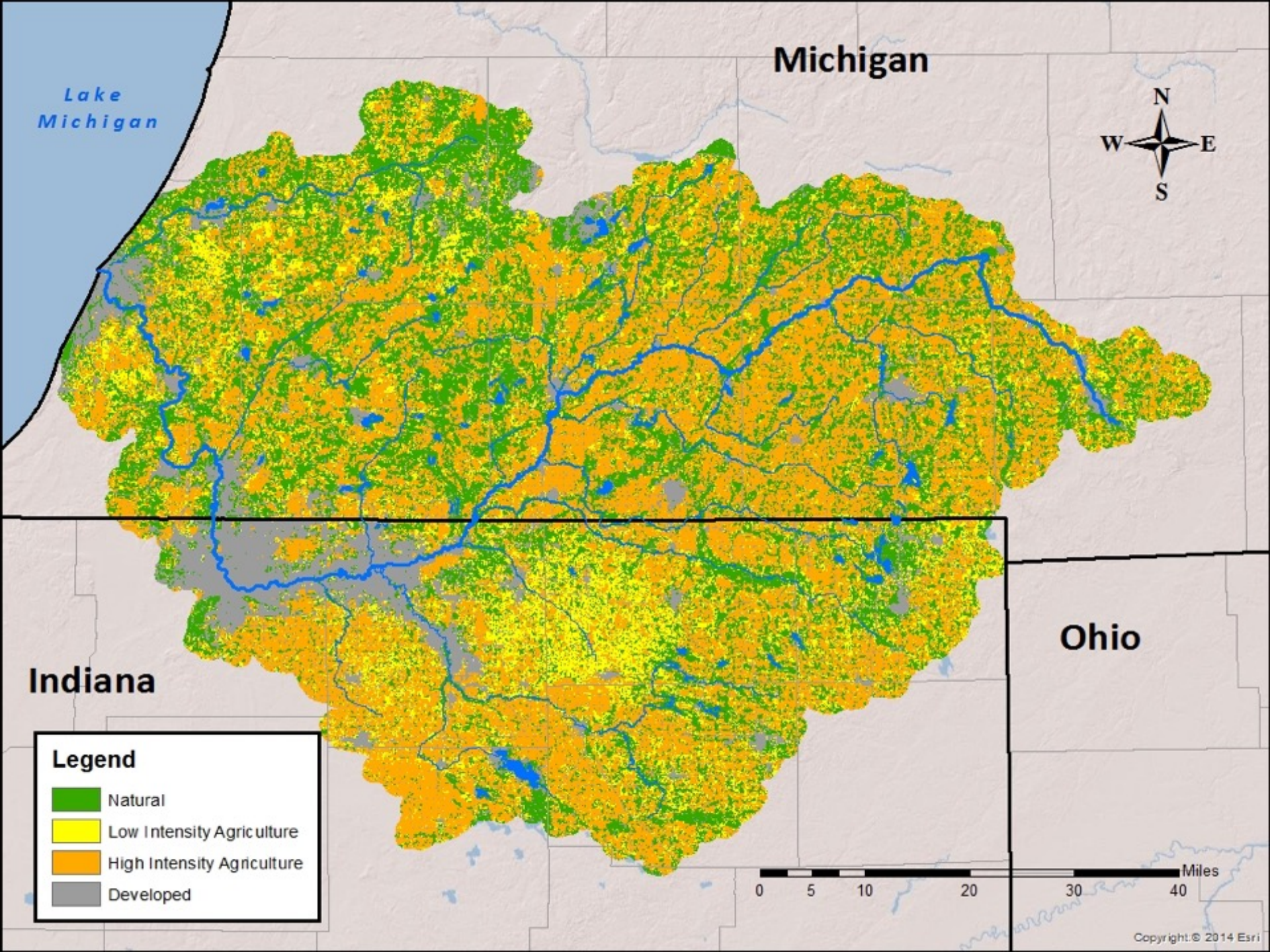
Indiana

Ohio

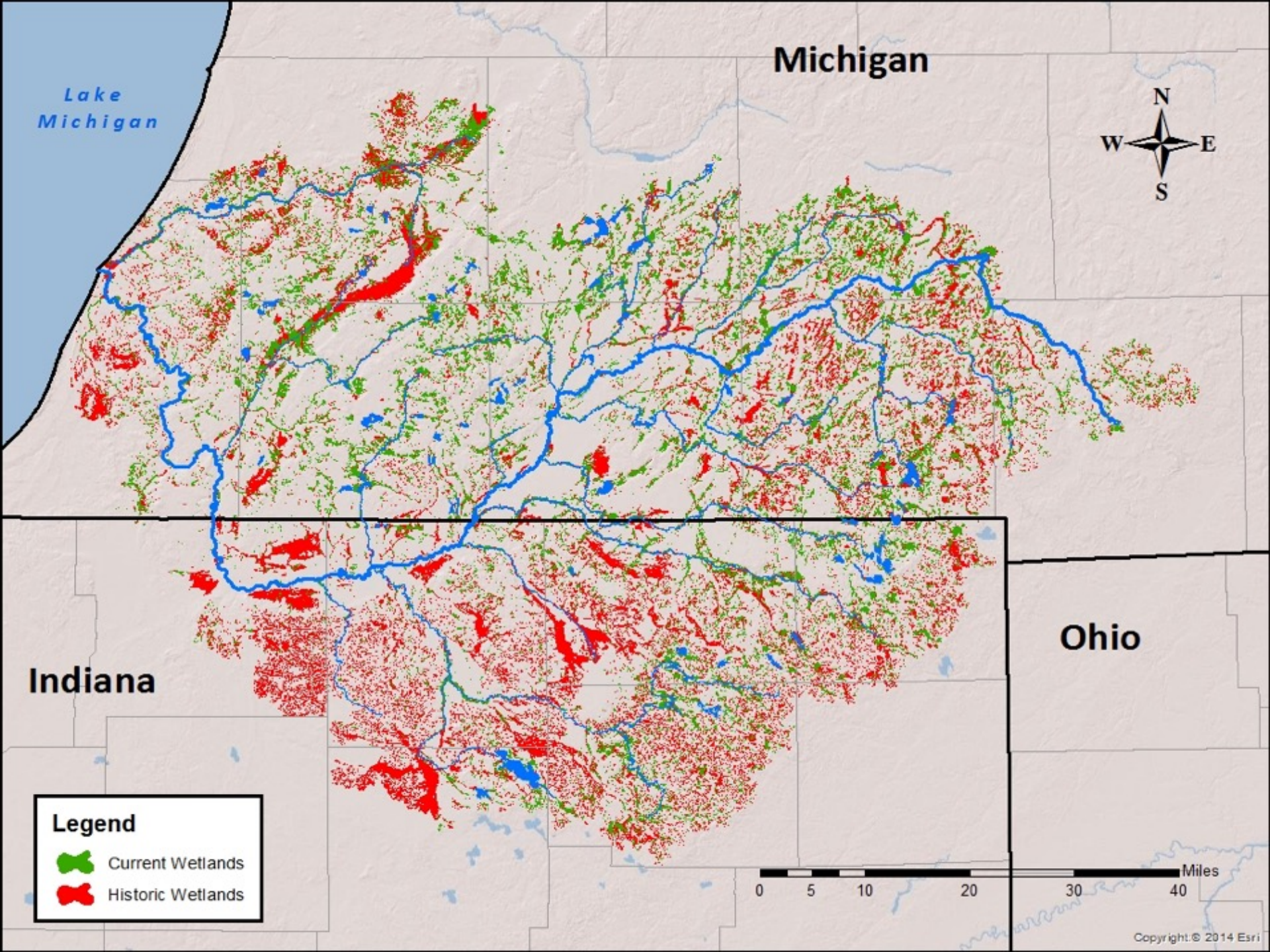
DeKalb













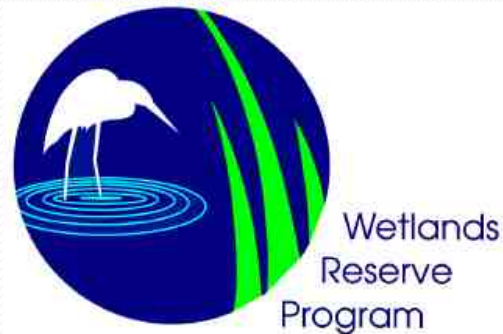
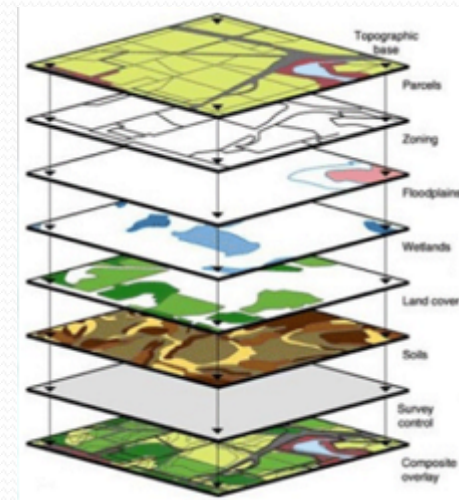




# Wetland Partnership Project

## *A 3 Step Strategy for Watershed Improvement:*

1. **ENHANCE** existing and historic wetland data
2. **PRIORITIZE** by geography and functional significance
3. **UTILIZE** results to direct implementation efforts





**MAKE THE CONNECTION!**

**Individual Values > Specific Wetland Functions**

*©Robert G Breese*





# **Agricultural Drainage: Challenge or Opportunity?**

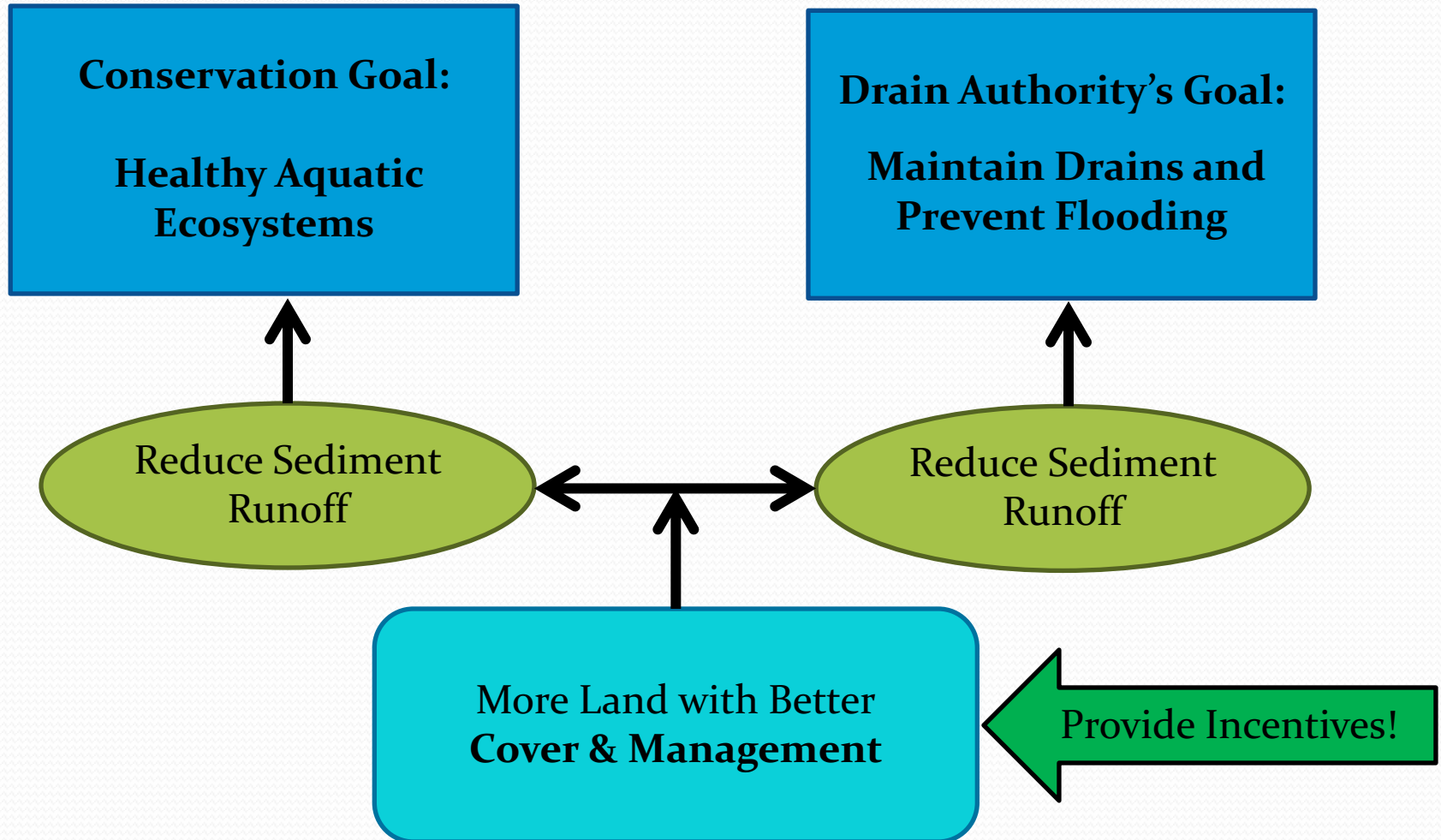


**We know drains destroy wetlands.  
Can their cost help bring some back?**





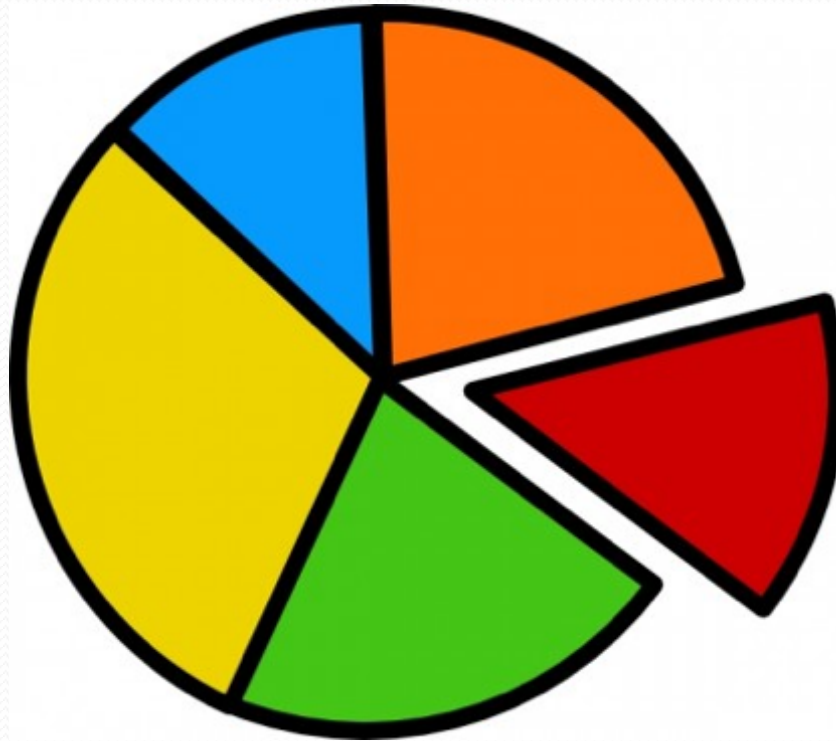
# The common denominator:





# Drain Law 101:

The Drain Code recognizes some people benefit more than others, which creates the need for **apportionment**.





# Determining Benefit



Admin/Service



Land  
Cover/Use



Soils  
Hydric/Upland



Land  
Management

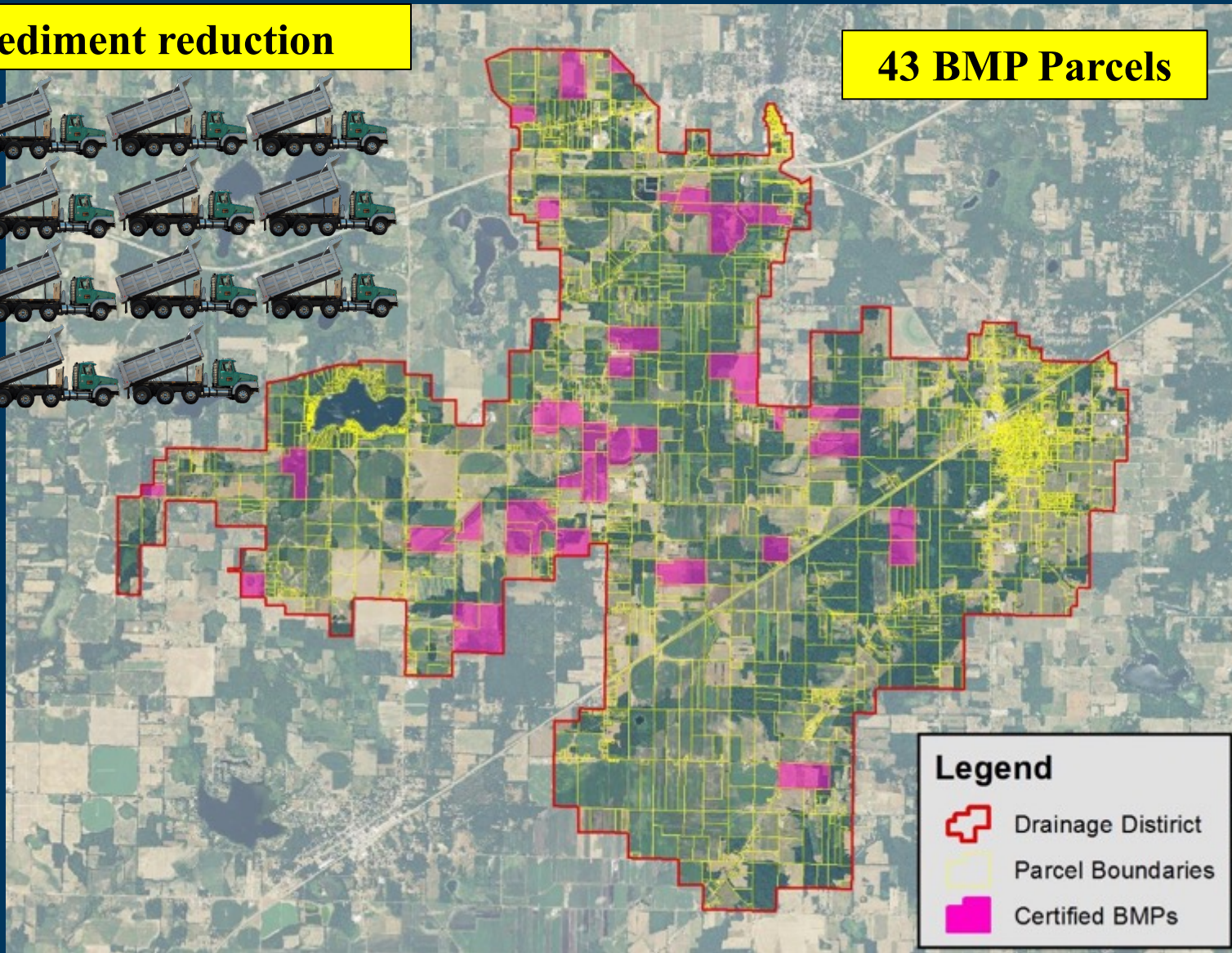


# Pilot Project Outcomes



**192 tons of sediment reduction**



**43 BMP Parcels**



## Legend

-  Drainage District
-  Parcel Boundaries
-  Certified BMPs

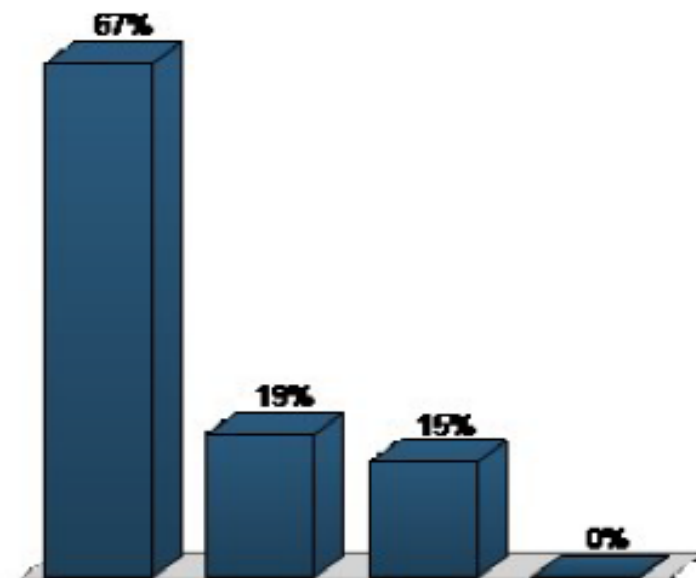


**21% savings**



Do you think management practices that reduce sediment and runoff should be considered when determining benefits derived and apportionment?

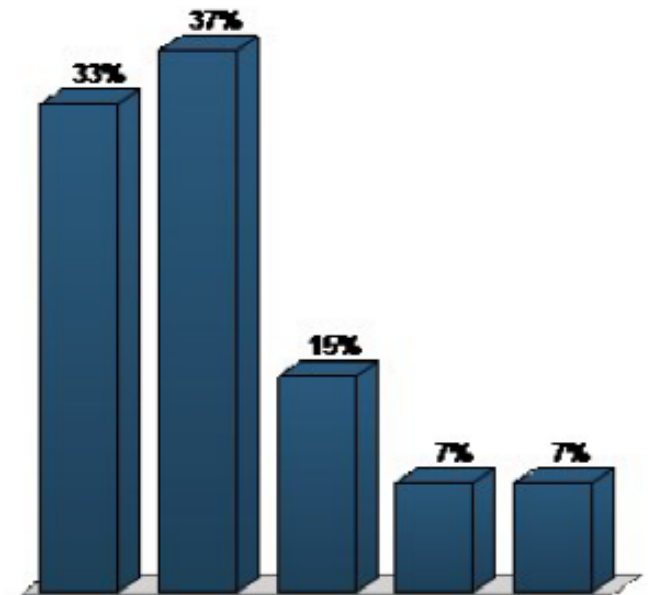
| Responses    |         |       |
|--------------|---------|-------|
|              | Percent | Count |
| Yes          | 66.67%  | 18    |
| No           | 18.52%  | 5     |
| Maybe        | 14.81%  | 4     |
| I don't know | 0%      | 0     |
| Totals       | 100%    | 27    |



*Results from survey at 2015 MACDC Winter Conference*

Please indicate your level of interest in at least considering implementing a similar strategy in your county?

|   | Responses |       |
|---|-----------|-------|
|   | Percent   | Count |
| Very interested                                 | 33.33%    | 9     |
| Somewhat interested                             | 37.04%    | 10    |
| Not very interested                             | 14.81%    | 4     |
| I would NOT consider implementing this strategy | 7.41%     | 2     |
| I'm not in a position to answer                 | 7.41%     | 2     |
| Totals  | 100%      | 27    |



*Results from survey at 2015 MACDC Winter Conference*





When all else fails, pay them...

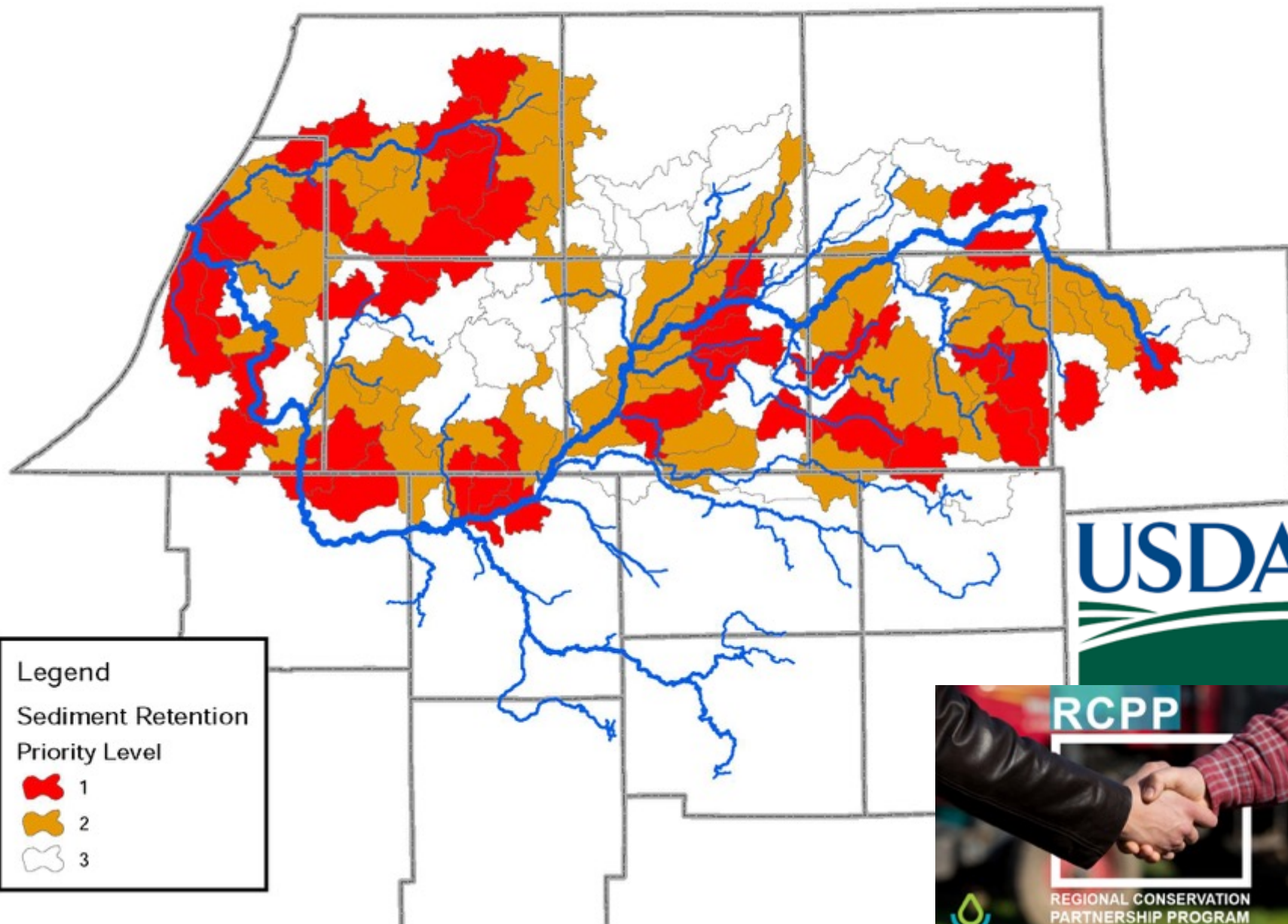


But spend your money wisely...

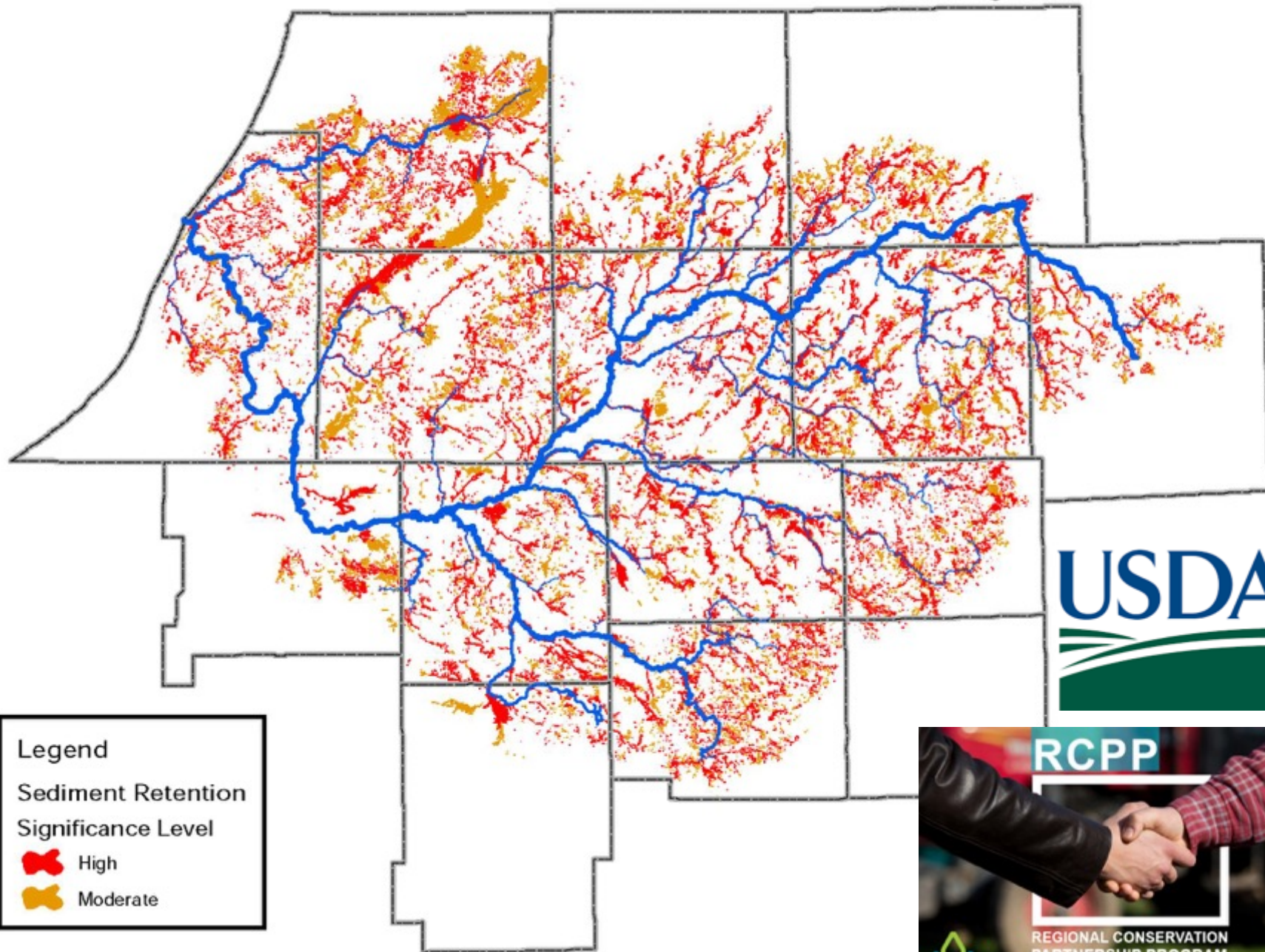




## *Michigan Sediment Retention Wetland Loss Subwatersheds*



# *Sediment Retention Wetland Restoration Priority Areas*







# St. Joseph River Basin Commission

## **SJRBC**

227 W. Jefferson Blvd.  
1120 County-City Bldg.  
South Bend, IN 46601

**[www.sjrbc.com](http://www.sjrbc.com)**

Contact: Matt Meersman  
[BasinDirector@macog.com](mailto:BasinDirector@macog.com)  
574.287.1829 ext.800