

An Environmentalist and a Drain Commissioner Converge in an Emergent Wetland

Tom Zimnicki

Agriculture Policy Director

Michigan Environmental Council

MI Wetland Association- September 28, 2017

Michigan Environmental Council

- A coalition of 70+ member organizations focused on advancing better environmental policy in Lansing
- We cover diverse issue areas:
 - Drinking water quality, health policy, food access, children's health, solid waste management, environmental justice, natural resources (mining, sand dune preservation, etc.), energy infrastructure/rate payer protection, wetland protection, agriculture

How do you view environmentalists?



The Greens are...



...the new Reds

Who is the new guy?

- My background and how it shapes my approach to policy at MEC



Function and Value of Wetlands for Water Management

- Water Purification
- Flood Protection
- Shoreline Stabilization
- Groundwater Recharge
- Streamflow Maintenance
- Wildlife Habitat
- Recreation Opportunities



'Environmental Perspective' on Wetlands for Water Management

- Water Purification
- Flood Protection
- Shoreline Stabilization
- Groundwater Recharge
- Streamflow Maintenance
- Wildlife Habitat
- Recreation Opportunities



“Weather Extremes”

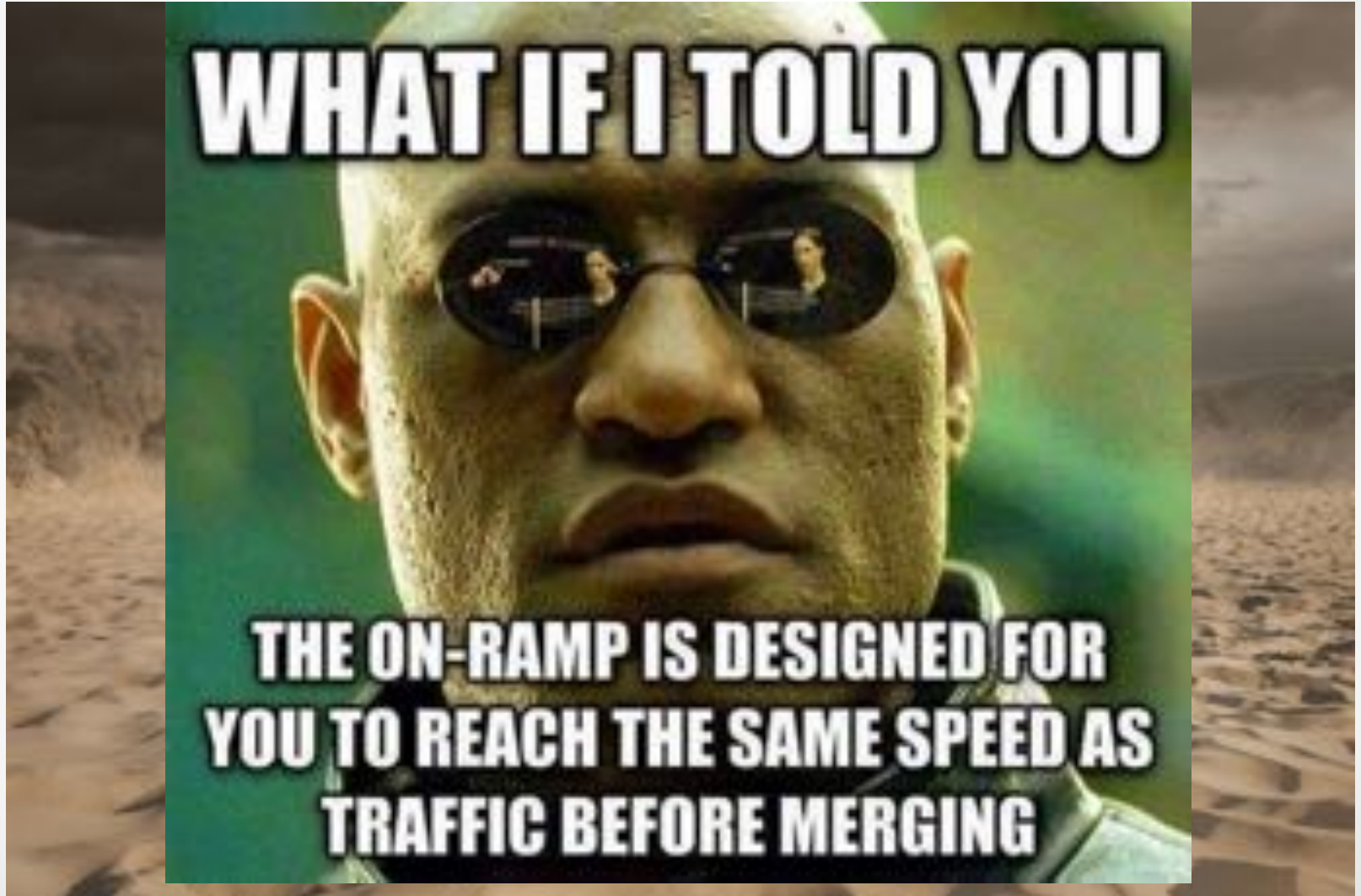
There is no plan B,
because there is no
PLANET B!

- UN Secretary-General Ban Ki-moon

Effects in Michigan

- Earlier spring runoff, larger floods, hotter summers
 - Increased degradation from storm events, invasive species, human activities
- Loss of wetland function will degrade streams, lakes, rivers that depend on wetland filtration
- Erratic rainfall patterns
- Issues with groundwater recharge

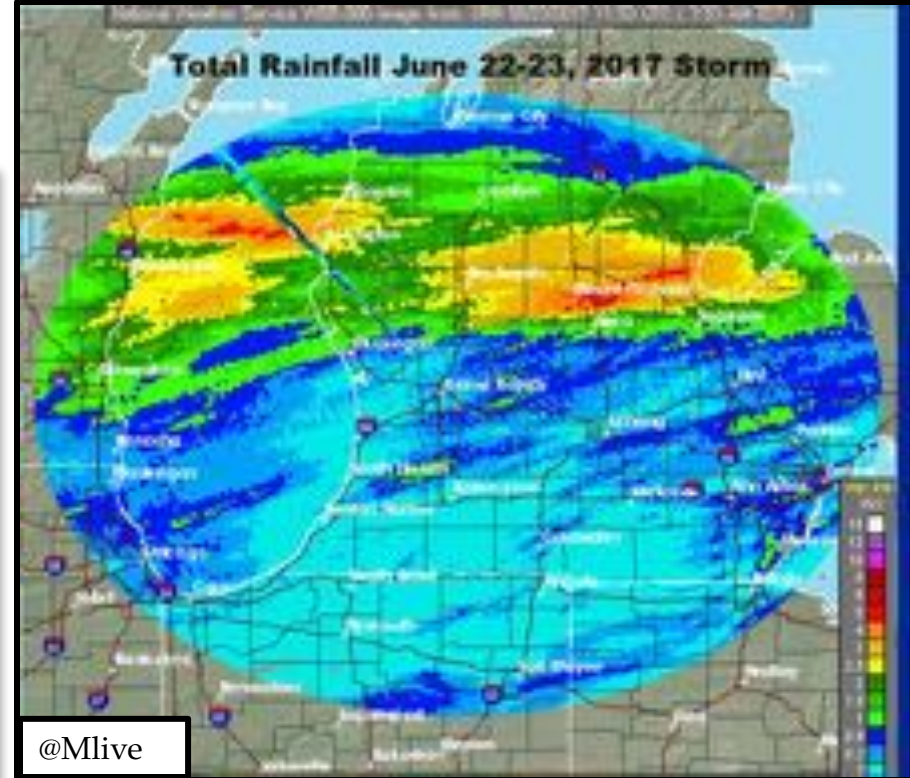
Planning for the future



Planning for the future and addressing today's issues

- MACDC
 - Maintain base flow
 - Sedimentation
 - Volume control
- DEQ
 - Water quality
- Municipalities
 - Flooding
 - Permits? MS4 concerns
 - Stormwater
- DNR
 - Recreation opportunity preservation
 - Coastal wetlands

Water Volume



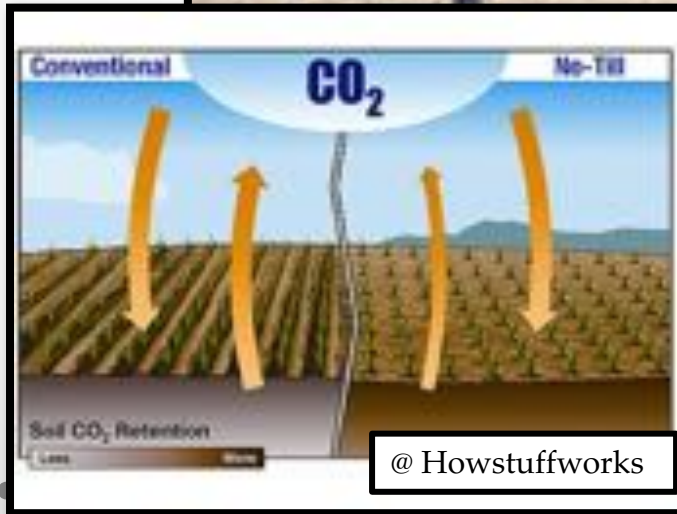
Where does it all go?



Water Quality



@ MN BWSR



@ Howstuffworks



@ USDA NRCS

How do we manage excess water?

- Slow runoff with vegetation
- Promote infiltration
- Urban green infrastructure
- Ditches
- Improve tile systems
- Detention / retention
- Are we effective at managing excess water?
- How adaptable are the plans?
- How cost effective are we?
- How do we target new projects?



Regional wetlands and treatment trains

@ReefCatchments Australia



My thought process

Lake Erie - Domestic Action Plan (DAP)

Public Hearing
Adrian, Michigan
June 26, 2017
MICHAEL WISSEL and MONA

Comments to: REG.LAKE@DNR.MICHIGAN.GOV

Show me the money... **and efficiency!**



BMP	Total Project Cost (\$)	Total TSS Removed (ton)/yr	\$/ton/yr TSS	Total TN Removed (lb)/yr	\$/lb/yr TN	Total TP Removed (lb)/yr	\$/lb/yr TP
Grassed Buffer							
Cover Crops							
DWM							
Regional Detention + upstream BMPs							

Closing thoughts

- Not claiming I am the only person who has run the unit cost of BMPs
 - It is not a given though
- Enviros (at times) viewed as anti-constructed wetlands/regional detention/retention
 - Mercedes or nothing... I'll take a Pinto over walking
- Multiple benefits of regional detention/constructed wetlands
- Diverse partner opportunities
- Important for long term climate planning
- Maybe not all enviros are ready to engage, but many are



Any Questions?

CW politics

"What I say is what I say."
Donald Trump



PHOTO: JIM SPELLMAN/GETTY IMAGES