



MICHIGAN DEPARTMENT OF
ENVIRONMENT, GREAT LAKES, AND ENERGY

Michigan


Office of the Environmental Justice Public Advocate

Regina Strong

Environmental Justice Public Advocate


strongr1@michigan.gov

Michigan.gov/Environmental Justice

A large green shape on the left side of the slide, consisting of a solid green rectangle on the left and a semi-circle on the right.

What is Environmental Justice?

Environmental Justice is the **equitable treatment** and **meaningful involvement** of all people regardless of race, color, national origin, ability or income and is critical to the development and application of laws, regulations, and policies that affect the environment, as well as the places people live, work, play, worship and learn.

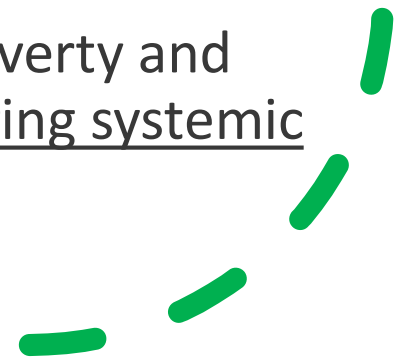
Four short, thick green lines arranged in a curved, upward-sloping pattern in the bottom right corner of the slide.

What do we
mean by
“equitable
treatment”

No group of people bears a disproportionate share of the negative consequences resulting from governmental, industrial or commercial operations and policies

All people benefit from the application of laws and regulations

Eliminating barriers such as poverty and lack of access, as well as repairing systemic injustices



What do we mean by “meaningful involvement”

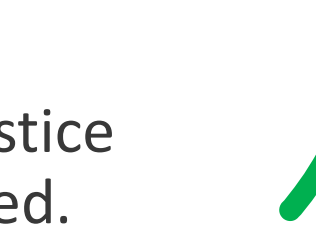
People have an opportunity to participate in decisions that affect their environment and/or health

Decision makers seek out and facilitate the involvement of those potentially affected

People’s concerns are considered in decision-making processes

People can influence state agency decisions

The Executive Order

- Governor Whitmer created the Office of the Environmental Justice Public Advocate and the role of Environmental Justice Public Advocate in Executive Order 2019-06
 - Office of the EJPA was created as a Type I agency housed within EGLE's Executive Office.
 - As a Type I agency, the office has a direct line to governor's office
 - Interagency Environmental Justice Response Team was established.
- 

Michigan and EJ

The Interagency Environmental Justice Response Team began meeting monthly in July 2019.

Work Groups of the Response Team have been meeting since last fall.

Michigan Advisory Council for Environmental Justice (MAC EJ) has been meeting since February 2020.

Engagement with communities throughout the state to address equitable application of environmental laws and regulations is underway.

Michigan Advisory Council on Environmental Justice



Office of the Environmental Justice Public Advocate (OEJPA)

- The Team
 - Regina Strong, Head of the Office of the Environmental Public Advocate
 - Katie Lambeth, Environmental Justice & Tribal Liaison/Non-discrimination Coordinator
 - Kate Hutchens, Environmental Justice Project Coordinator

OEJPA Actions & Projects

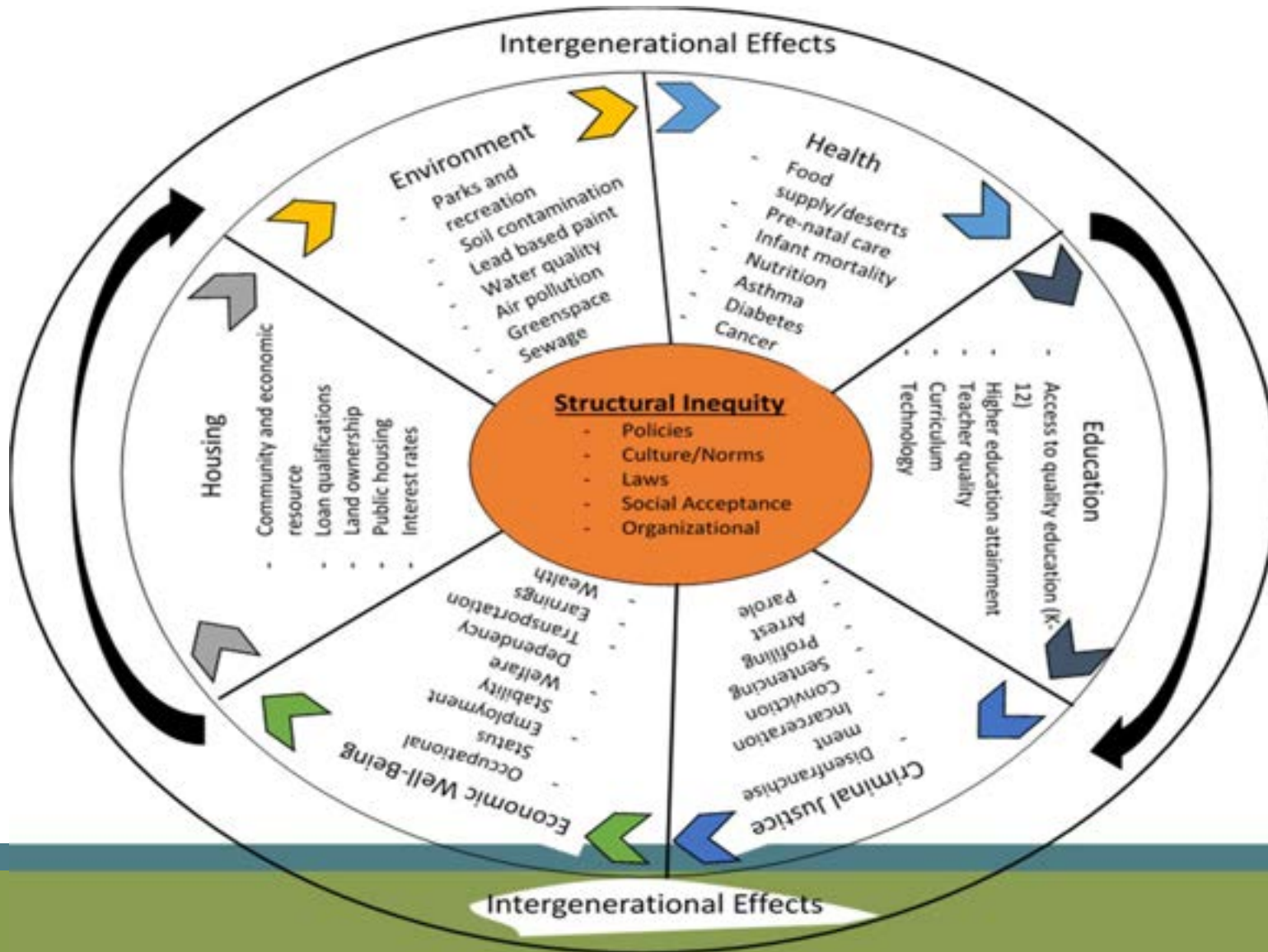
- Development of EGLE's first Limited English Proficiency Plan (LEP) in English, Spanish and Arabic
- Update of EGLE's Non-Discrimination Policy
- EGLE All Staff Environmental Justice Training
- Developing an EJ Concerns/Complaint process
- Convening the Interagency Environmental Justice Response Team
- Creating and convening an EGLE EJ Team

OEJPA Actions & Projects

- Collaboration with the state's COVID Racial Disparities Task Force
- Air Quality in EJ Schools HVAC Assessment Project
- Coordination of Michigan Wild Rice Initiative
- Convening the Michigan Advisory Council on Environmental Justice (MACEJ)
- Hosted 8 regional roundtables across the state
- Convened EGLE Director and Tribal Leaders Roundtable

OEJPA Actions & Projects

- Development of MiEJScreen
- Coordinating EJ Community Resiliency Planning Pilot in 48217/Tri-cities
- Development of the EJ Community Mobile Air Monitor Project (Purple Air) with EGLE AQD
- Collaboration with the Poverty Task Force
- Developing a Tribal Consultation Policy
- Hosting the 2021 & 2023 Michigan Environmental Justice Conference



Categories	Environmental Exposure	Environmental Effects	Sensitive Populations	Socioeconomic Factor
	NATA Air Toxics Cancer Risk	Proximity to Cleanup Sites	Asthma	Low Income Population
	NATA Respiratory Hazard Index	Proximity to Hazardous Waste Facilities	Cardiovascular Disease	Black, Indigenous, People of Color Population
	NATA Diesel Particulate Matter	Impaired Water Bodies	Low Birth Weight Infants	Educational Attainment
Particulate Matter (PM _{2.5})	Proximity to Solid waste Sites and Facilities	Blood Lead Level	Linguistic Isolation	
Ozone	Lead Paint Indicator	Life Expectancy	Population Under Age 5	
Traffic Density	Proximity to RMP Sites		Population Over Age 64	
	Wastewater Discharge Indicator		Unemployment	
			Housing Burden	
Indicators	Environmental Conditions		Population Characteristics	
	$\frac{(\text{Average percentile of Environmental Exposure indicators} + 0.5 \times \text{average percentile of Environmental Effects indicators})}{2}$		$\frac{(\text{Average percentile of Sensitive Population indicators} \times \text{average percentile of Socioeconomic Factor indicators})}{2}$	
Score	Final Composite Score = Environmental Conditions score x Population Characteristics score MiEJScreen Score			

Esri World Geocoder

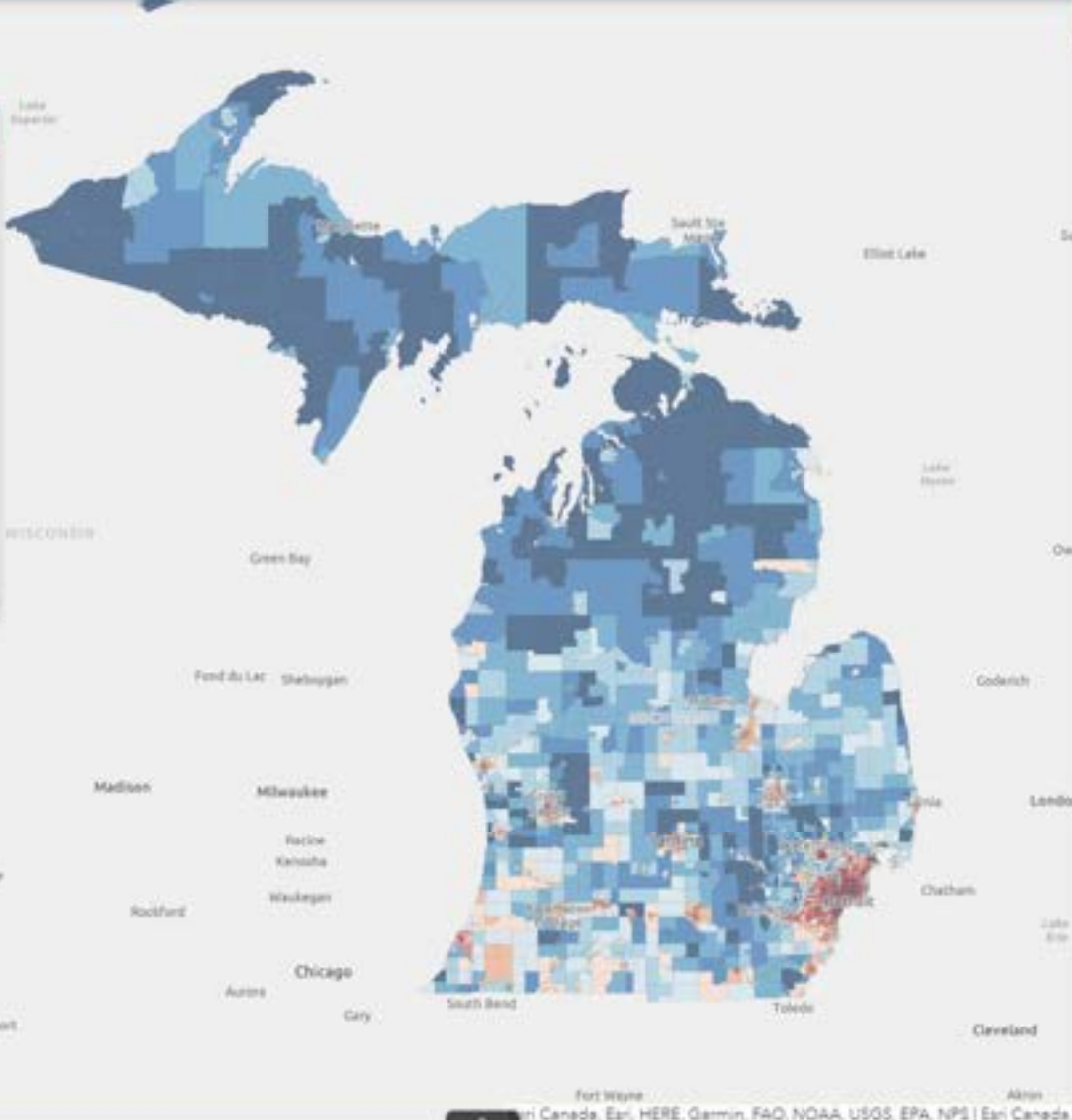


Legend

MiEJscreen Score Percentile

MiEJScorePt.

91 - 100
81 - 90
71 - 80
61 - 70
51 - 60
41 - 50
31 - 40
21 - 30
11 - 20
0 - 10



Layer List

Layers

- MiEJscreen Score Percentile
- Environmental Conditions Percentile
- Population Characteristics Score Percentile
- 1) Environmental Conditions: Exposure
- a) NATA Air Toxics Cancer Risks
- b) NATA Respiratory Hazard Index
- c) NATA Diesel Particulate Matter
- d) Particulate Matter 2.5 (PM2.5)
- e) Ozone
- f) Traffic Proximity and Volume
- 2) Environmental Conditions: Environmental Effects
- a) Cleanup Sites Proximity
- b) Treatment and Disposal Facilities Proximity
- c) Impaired Waters
- d) Solid Waste Proximity
- e) Lead Paint Indicator
- f) RMP Proximity
- g) Wastewater Discharge Indicator
- 3) Population Characteristics: Sensitive Populations
- a) Asthma Emergency Room Discharges



Context Layers

Michigan PFAS
Sites

Ozone/SO2 Non-
Attainment Areas

Schools, hospitals,
places of worship

Roads and railroads

Boundaries (zip
code, cities,
counties, tribal
areas, etc.)

Redlining maps

Sites reporting to
EPA

Impaired water
boundaries

Population density

Public housing

Prisons

EJ Grants

Thank you!

- Regina Strong, strongr1@michigan.gov